



LARGE DIAMETER NON-PRESSURE RIEBER REPLACEMENT GASKET INSTALLATION PROCEDURES

STEP # 1:

Remove the damaged or fish mouthed gasket from the gasket groove. Care must be taken not to damage the sealing surface during gasket removal. If removing a gasket that is still seated in the groove it works best to slowly slip a flat blade screwdriver under the bottom side of the gasket then pry up slightly working the gasket away from the groove, then pull the gasket out the rest of the way.

SEE ILLUSTRATION # 1

STEP # 2:

Inspect the gasket groove after removing the gasket. Clean and check to insure there is no damage to the sealing surface.

STEP # 3:

Installation of the new gasket requires folding of the gasket around a section of pipe. This will insure minimal kinking during installation. Install the folded gasket per attached drawing #4 and expand it outward into the groove. (Note: 8" PVC pipe works best for the folding process).

SEE ILLUSTRATION # 2

STEP # 4:

Use a plastic or rubber hammer to hit down the folded area until the gasket fits into the groove snugly.

SEE ILLUSTRATION # 3

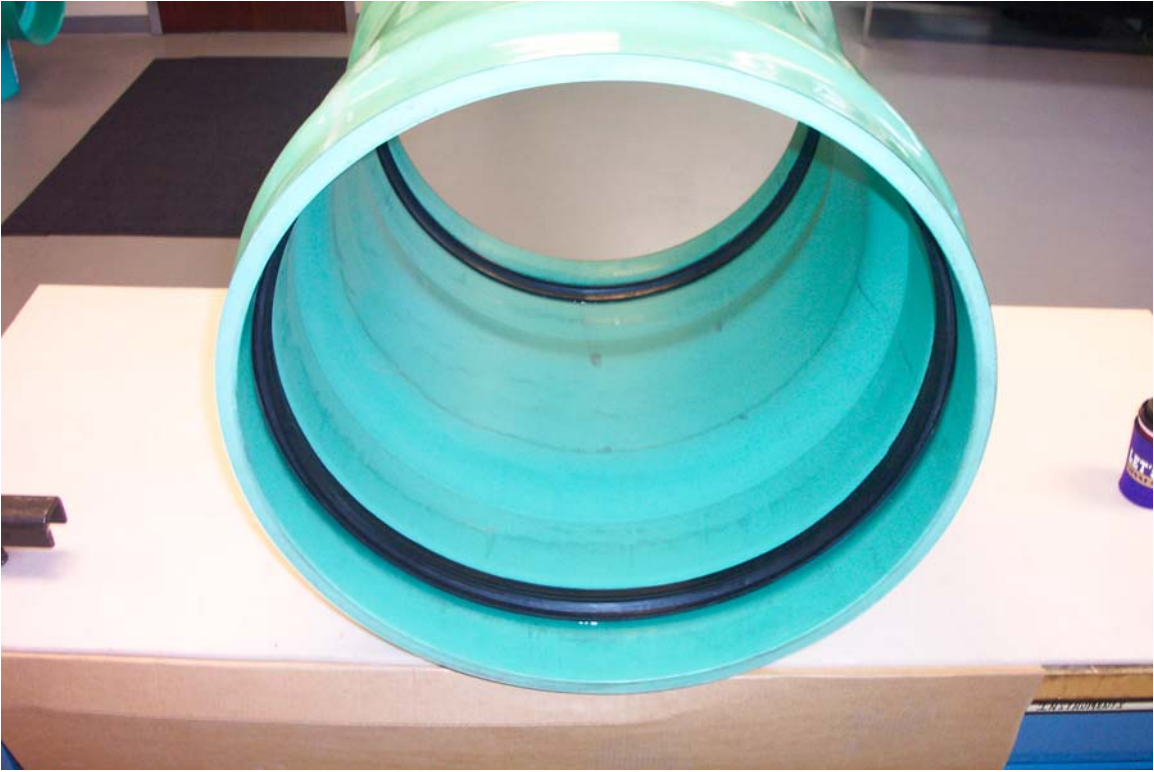
ILLUSTRATION # 1



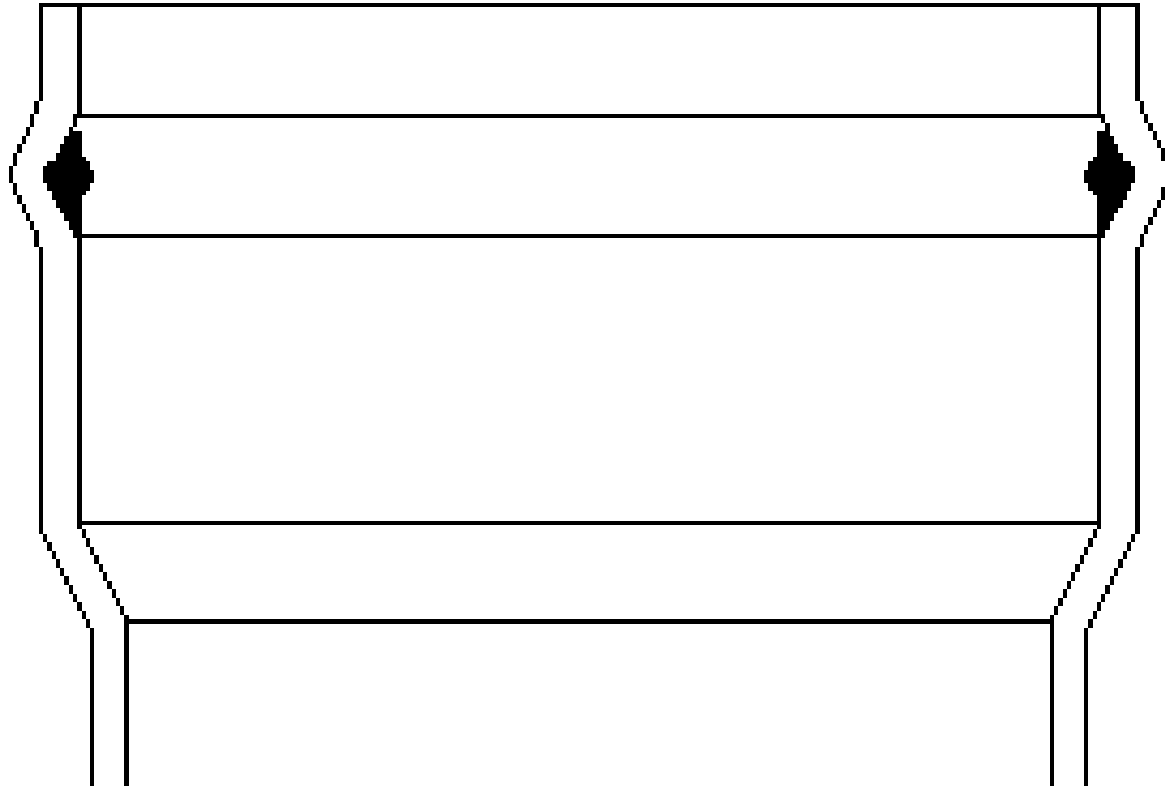
ILLUSTRATION # 2



ILLUSTRATION # 3



RIEBER GASKET INSTALLED PROPERLY



Drawing #4